



TRANE®

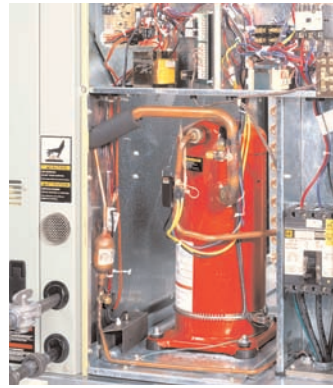
Precedent™

*3 to 10 Ton Light Commercial Convertible
Units with ReliaTel™ Microprocessor Controls*



August 2007

RT-SLB001-EN



Precedent...The same Trane quality with added flexibility

Precedent is an exceptional packaged product line with the flexibility to span the entire spectrum of light commercial applications.

Sleek Exterior

A sleek compact cabinet with rounded corners for safety makes Precedent easy to handle. With its versatility and easy handling, it is a perfect match for the most complex or the simplest light commercial applications.

Lots of Options

Precedent has outstanding features and offers an unprecedented selection of options including a choice in controls, electromechanical or the highly sophisticated ReliaTel™ microprocessor controls.

Ultimate Flexibility

Who is in the best position to decide which features meet your specific application needs? You, the customer, of course. Trane's Precedent offers the most flexible light commercial packaged air conditioners in the industry. These units with convertible airflow are not prepackaged; you order and pay for only those options you really need. Things like:

- 1-inch Filters with Rack Capable of Accepting 2-inch Filters
- Direct or Belt Drive, Standard or Oversized Evaporator Fan Motors
- Gas/Electric, Cooling Only, Heat Pumps
- R-410A Refrigerant Available on 3, 4 and 5 Ton 13 SEER, 15 SEER and 6-10 Ton Models
- Low, Medium or High Heat Gas Heating Capacities
- ReliaTel™ Microprocessor or Electromechanical Controls
- Short Orifice or Thermal Expansion Valve Refrigerant Control
- Standard or High Efficiency Cooling Capacities
- Wide Array of Electric Heat Options

Quality and Reliability

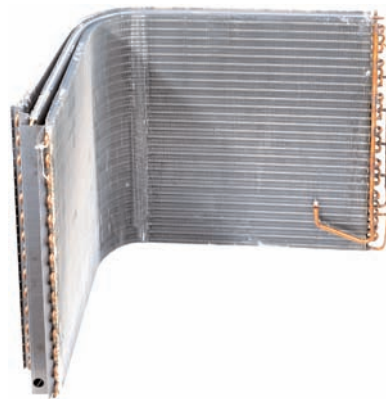
- Scroll Compressors
- Progressive Tubular Heat Exchanger with Stainless Steel Burners
- Optional Stainless Steel Heat Exchanger with 10-year warranty
- Double Sloped and Reversible Condensate Drain Pan

Easy to Install

- Converts from Downflow to Horizontal by moving two panels
- Single-Side Access
- Easy Access Low Voltage Terminal Board
- Single Point Power Connection
- ReliaTel Controlled Units Operate as Standard with Zone Sensor or Thermostat
- Standard Through the Base Condensate Connections

Easy to Service

- Patent Pending Multi-row Condenser Coil Designed with Gaps for Easy Cleaning
- ReliaTel Assists Service Through the Use of Built-in Test Modes
- Standardized Components
- Single-Side Service
- Colored and Numbered Wiring
- Easy Adjust Belt Drive Motors



Factory Installed Options for Higher Quality, Lower Cost Installations

The following options ship factory-installed within our standard "shortest in the industry" ship cycle time.

- **ReliaTel™ Microprocessor** or **Electromechanical Controls**
- **Through the Base Gas, Condensate and Electric Utilities** simplify wiring and piping.
- **Unit Disconnect** or **Circuit Breakers** ensure unit shutdown for servicing. Factory installation of unit disconnects reduces cost, provides proper mounting, and the opportunity to upgrade to unit circuit breaker protection.
- **Economizer, Dry Bulb, Reference or Comparative Enthalpy** provides free cooling as the outdoor temperature and/or humidity decreases. Correctly installed economizers offer great energy savings.
- **115-Volt Electrical Convenience Outlet** provides a building or unit powered GFI circuit for common air conditioning tools and lighting, as well as providing roof accessible outlets required by NEC.
- **Dirty Filter and Fan Failure Switches** trigger a thermostat service light or building controls system to indicate dirty filters or inoperative fans. Factory installation eliminates prohibitive field-installed cost.
- **CompleteCoat™ Condenser Coil Coating** is a cathodic epoxy type electrodisposition coating formulated for high edge build to plate fin and tube heat exchangers. The coating is selected to provide excellent resistance and durability to corrosive effects of alkalis, acids, alcohols, petroleum, seawater, salt air and corrosive environments.
- **Hinged Access Doors** permit easy entry to the unit's service access areas. These doors reduce potential roof damage from screws or sharp access door corners.
- **CO₂ Sensing** provides the ability to monitor space occupancy levels within the building by measuring the parts per million of CO₂ (Carbon Dioxide) in the air. As the CO₂ levels increase, the outside air damper modulates to meet the CO₂ space ventilation requirements. The CO₂ accessory is available for field-installation.
- **Ventilation Override Accessory** enables the unit to be set to transition up to 3 different pre-programmed sequences for Smoke Purge, Pressurization, and Exhaust. The transition occurs when a binary input on the RTOM is closed (shorted). This would typically be a hard wired relay output from a smoke detector or fire control panel. The ventilation override accessory is available for field-installation.
- **Dehumidification (Hot Gas Reheat)** — This option allows for increased outdoor air ventilation. It reduces humidity levels while increasing comfort level in the air space. Cooling can operate without a demand for dehumidification. The hot gas reheat coil is designed to deliver maximum reheat temperatures and to pivot for easy access cleaning. This is available for all high efficiency models (with the exception of 6 ton).
- **Direct or Belt Drive Evaporator Fan Motors** for varying airflow requirements.
 - Barometric Relief
 - Phase Monitor*
 - Supply and/or Return Smoke Detectors*

*Note: Phase Monitor available for 3 phase ReliaTel models only. Return air smoke detectors for certain models have minimum airflow requirements. For specifics, contact a Trane representative



Trane Precedent with ReliaTel Plus Trane Integrated Comfort™ Systems = Total Comfort, Total Control



VariTrac™

A control system that provides a thermostat and the intelligence for comfort control in each zone.



Tracker™ — Tracker building management panel provides microelectronic control and monitoring. Tracker has two-way communication with Precedent and VariTrac by providing status points and alarm messages through a communications link. This process creates a total Integrated Comfort System (ICS).

Tracker software provides scheduling, monitoring and timed override capabilities, as well as local and auto dial-out indication of alarms. Operator interface is simple and user-friendly with icons on the keypad and a two-line liquid crystal display (LCD).

Tracer™ — The Tracer Integrated Comfort System, when coupled with Precedent, provides the ultimate in centralized control, monitoring, energy management and equipment diagnostic functions.

Tracer allows the user to monitor and control the operation of each rooftop unit and coordinate their operation with other HVAC equipment.

ICS Status Points

(Assuming economizer with comparative enthalpy)

- Unit status
- Cooling and heating set point
- Zone temperature
- Supply and Exhaust fan on/off
- Compressor status
- Minimum damper positions
- Current damper position
- Outside and Supply air temperature
- Relative humidity

ICS Alarm Messages

- Zone Temperature sensor failure
- High temperature input open
- Heat failure limit open
- Outdoor air sensor failure
- Supply and Return air sensor failure
- Humidity sensor failure
- Local cool/heat set point failure
- Minimum position potentiometer failure
- Defrost control failure
- Compressor lockout
- Dirty filter
- Supply fan failure
- Supply air temperature
- Relative humidity



Trane
A business of American Standard Companies
www.trane.com

For more information contact your local sales office or e-mail us at comfort@trane.com

Literature Order Number	RT-SLB001-EN
Date	August 2007
Supersedes	RT-SLB001-EN May 2007

Trane has a policy of continuous product and product data improvement and reserves the right to change design and specifications without notice.